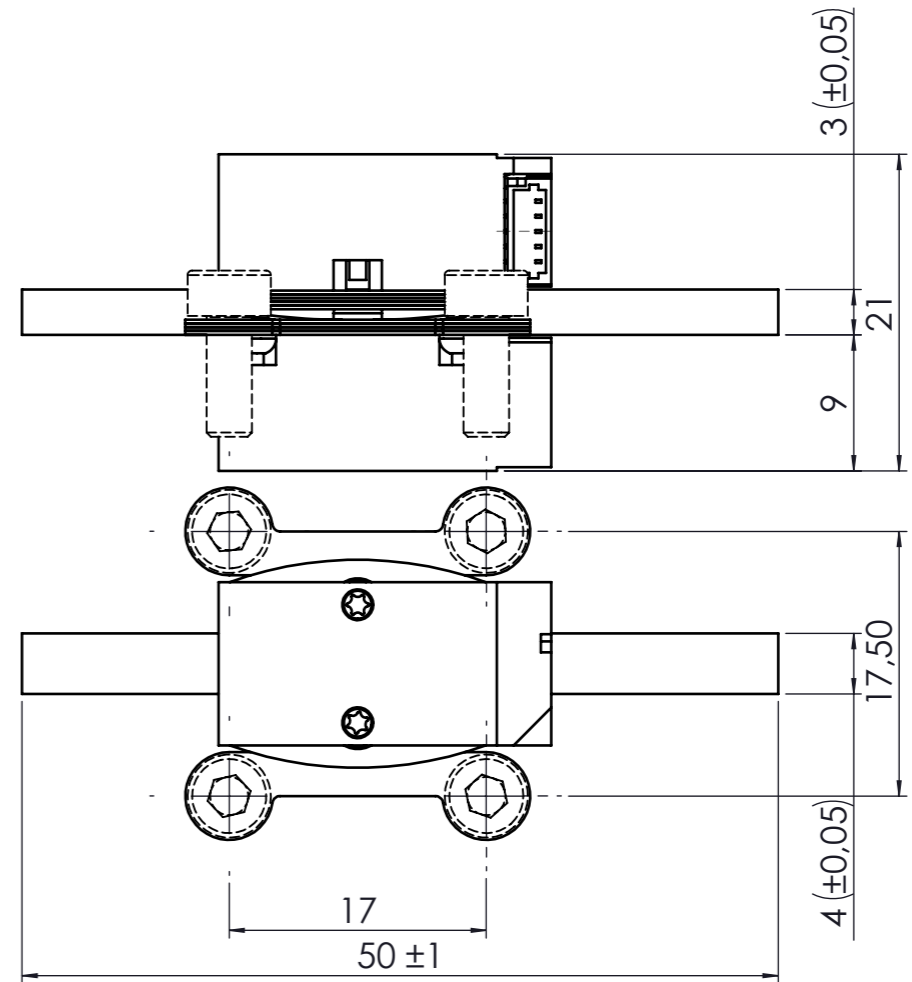
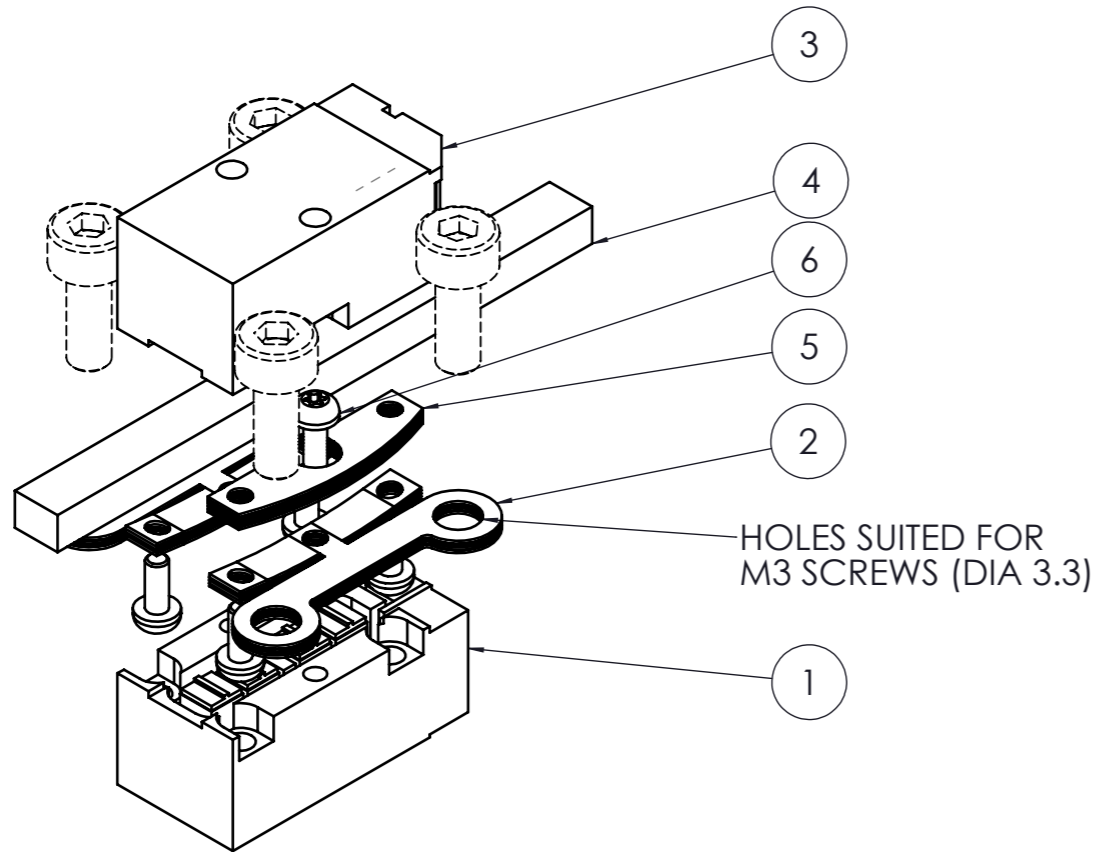
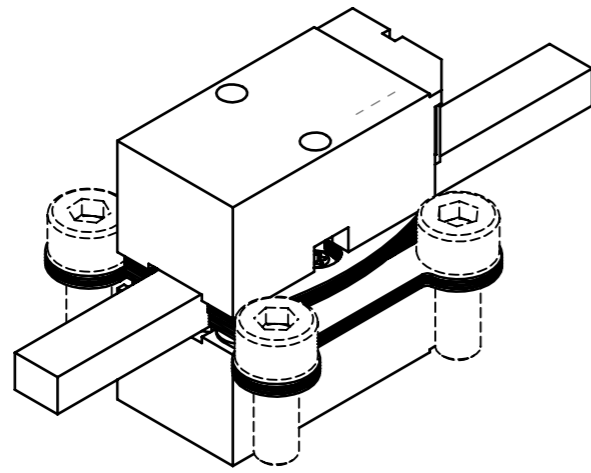


THE INFORMATION CONTAINED IN THIS DRAWING IS THE SOLE PROPERTY OF Piezomotor Uppsala AB ANY REPRODUCTION IN PART OR WHOLE WITHOUT THE WRITTEN PERMISSION OF Piezomotor Uppsala AB IS PROHIBITED.

Rev	Description
01	Changed screw type, was MC6S 1.6x4



NO.	Def ault /QT Y.	PART OR IDENTIFICATION NO.	NOMENCLATURE OF DESCRIPTION	MATERIAL/DIMENSION	NOTE
6	6	FSC-00025-00	SCREW	MRT 1.6x4, A4	
5	10	LAB400-34019	Spring Spacer -S		
4	1	MDR-T3040-50	Drive Rail Al2O3 3x4x50		
3	1	LAB400-31005	Piezo LEGS Twin Top -S		
2	8	LAB400-34018	TWIN SPRING M3 -S		
1	1	LAB400-31008	Piezo LEGS Twin -S		

PARTS LIST

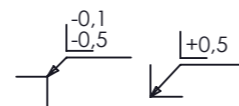
UNLESS OTHERWISE SPECIFIED DIMENSIONS ARE IN MM TOLERANCES ARE: ISO 2768-1fin THREADS ARE: ISO 965-1,2 6H/6g DIAMETER H12/h12		CAD GENERATED DRAWING, DO NOT MANUALLY UPDATE	
MATERIAL		APPROVALS	DATE
FINISH		DRAWN PBN	2009-01-26
DO NOT SCALE DRAWING		REVISED PBN	2009-05-18
		REVIEWED LHR	2009-05-18
		APPROVED ALN	2009-05-18
		SCALE	2:1



Piezo LEGS Twin 20N -S

SIZE A3	DWG. NO. LEGS-LT02S-10	REV. 01
CAD FILE: LEGS-LT02S-10.01		SHEET 1 OF 1

Unless otherwise stated:  
Sharp edges and corners acc. to ISO 13 715:



Surface finish:  $\sqrt{Ra\ 1.6}$   
Dimensions valid after surface treatment

