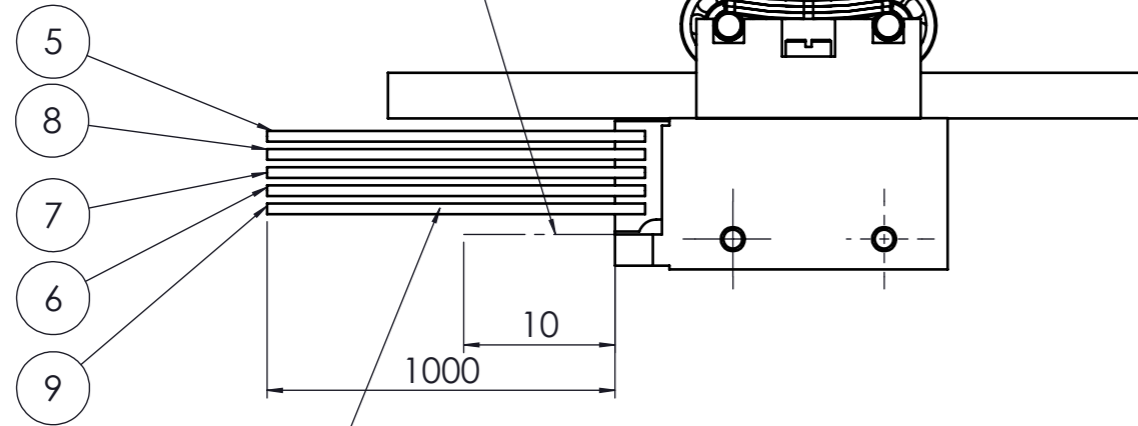
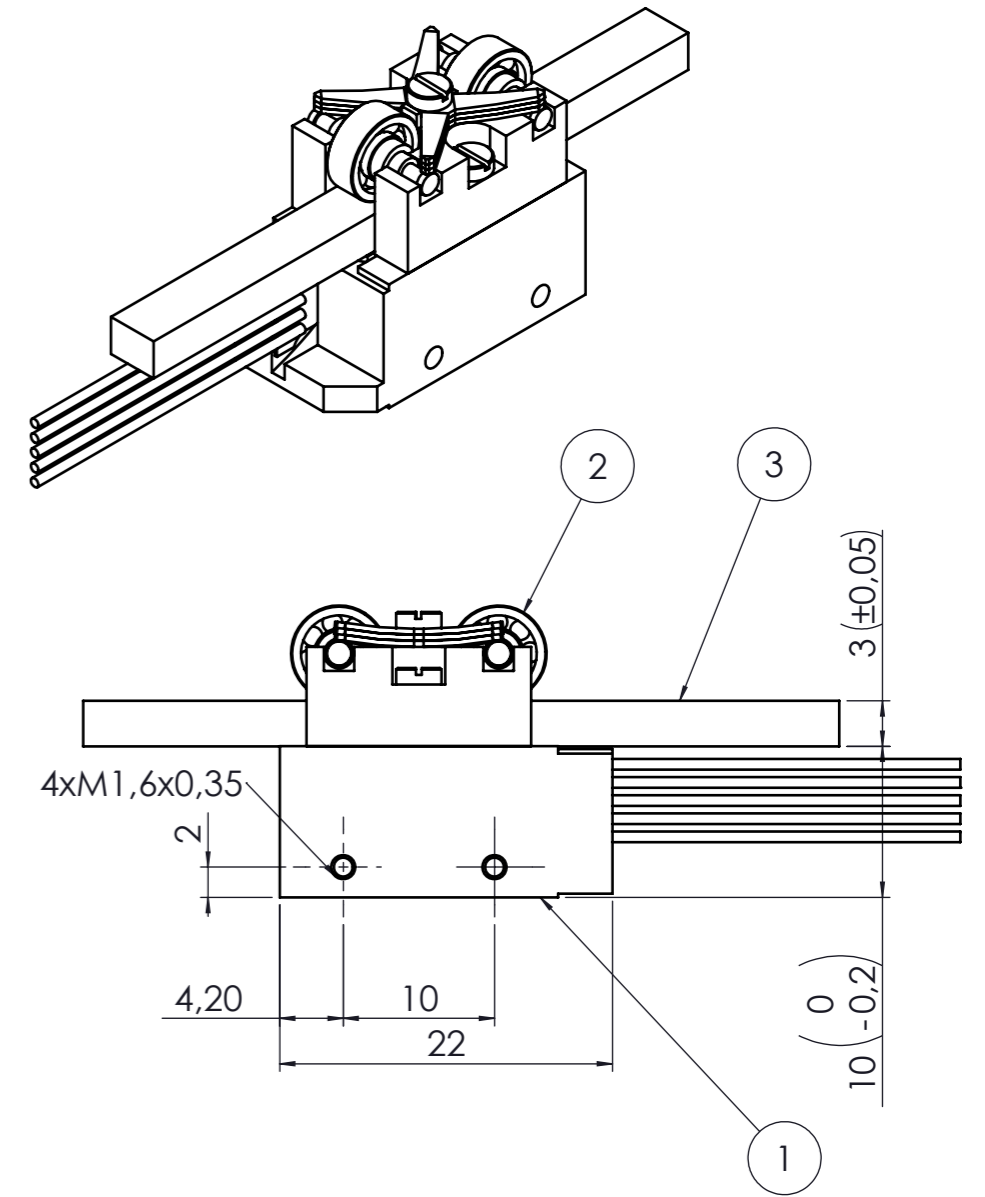
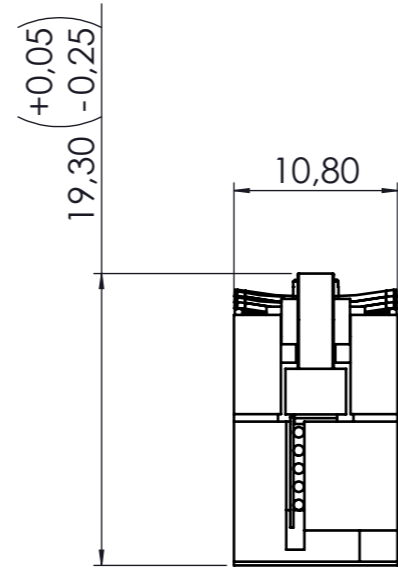
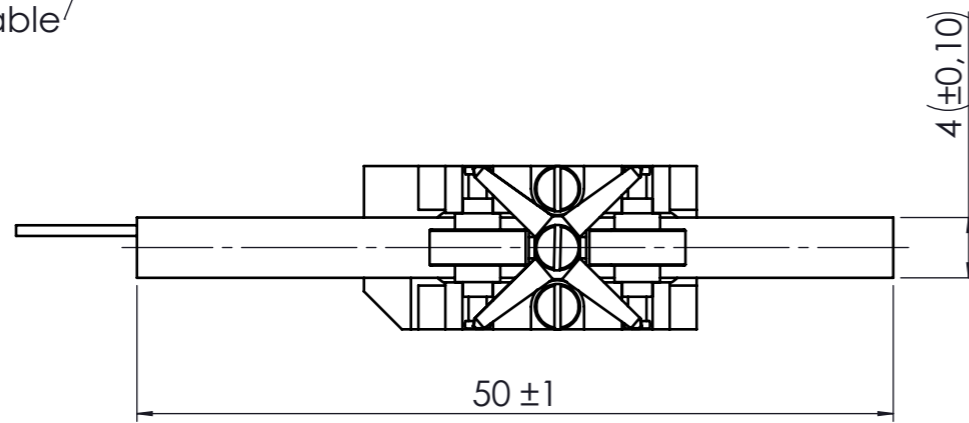


THE INFORMATION CONTAINED IN THIS DRAWING IS THE SOLE PROPERTY OF Piezomotor Uppsala AB ANY REPRODUCTION IN PART OR WHOLE WITHOUT THE WRITTEN PERMISSION OF Piezomotor Uppsala AB IS PROHIBITED.

No bending of cable allowed



PTFE Isolated cable



NO.	QTY.	PART OR IDENTIFICATION NO.	NOMENCLATURE OF DESCRIPTION	MATERIAL/DIMENSION	NOTE
9	1	ECA-00023	Cable PTFE	AWG28 Green	
8	1	ECA-00022	Cable PTFE	AWG28 Gray	
7	1	ECA-00021	Cable PTFE	AWG28 White	
6	1	ECA-00020	Cable PTFE	AWG28 Yellow	
5	1	ECA-00019	Cable PTFE	AWG28 Black	
4	2	LABT00-34007	SCREW	M1.6x6 Arcap	
3	1	MDR-T3040-50	Drive Rail Al2O3 3x4x50		
2	1	BM-LNMV-100	Bearing Holder Module		
1	1	LAB200-31004	Piezo Legs Linear -NMV		

PARTS LIST

UNLESS OTHERWISE SPECIFIED  
 DIMENSIONS ARE IN MM  
 TOLERANCES ARE: ISO 2768-1fin  
 THREADS ARE: ISO 965-1,2 6H/6g  
 DIAMETER H12/h12      ANGLES ±1°  
 MATERIAL  
 FINISH  
 DO NOT SCALE DRAWING

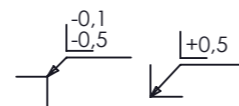
CAD GENERATED DRAWING, DO NOT MANUALLY UPDATE	
APPROVALS	DATE
DRAWN PBN	2009-01-26
REVISED PBN	2009-03-26
REVIEWED LHR	2009-01-26
APPROVED ALN	2009-01-26
SCALE	1:1



PiezoLEGS Linear -NMV

SIZE A3	DWG. NO. LEGS-L01NMV-11	REV. 01
CAD FILE: LEGS-L01NMV-11.01		SHEET 1 OF 1

Unless otherwise stated:  
 Sharp edges and corners acc. to ISO 13 715:



Surface finish:  $\sqrt{Ra\ 1.6}$   
 Dimensions valid after surface treatment

